

Contents

- About our company
- Our advantages
- Our products



About us

RHT power is a high-tech enterprise with more than 20 years experience in power industry, specialize in high-frequency switch power supply modules and power systems. We are a manufacturer of core components for DC power supplies and a comprehensive solution provider for high-power DC power supply systems.

After years of development, RHT power gained a high reputation in the industry, obtained national high-tech enterprise qualifications. Our customers include some listed companies in China, and the products have been applied to multiple national key construction projects.

As the company's business continues to grow and expand, its subsidiary **PUFA POWER** was established, mainly specialize in energy storage system, inverters, EV chargers, etc.

We work closely with customers from all over the world, and we are committed to providing personalized solutions that meet their specific needs. Our team of experts is always available to provide technical support and assistance to ensure that our customers get the most out of our products.



Partial application of our products

Our products have been widely applied in various fields

Railway system:

Xihe Railway
 Jiaoxin Railway
 Yuehai Railway
 Yutie Railway

Wind and solar power projects:

Gansu Jinchang 20MWp Power Station
 Xinyi Jinzhai 150MWp Power Station
 Qingdao Chengsheng Solar Town 20MWp Power Station
 Ningxia Hongshibao Dahexiang 10MWp Power Station



Port and aviation engineering:

Qingdao Port Crude Oil Terminal
 Shenzhen Chiwan Container Terminal
 Bao'an International Airport
 CNOOC Zhuhai Deepwater Offshore Engineering Project

Firepower and hydraulic engineering:

Guangxi Bagong Hydroelectric Power Station
 Shenzhen Mawan Power Plant
 Wuhan Guodingshan Power Plant
 Ningyang Thermal Power Plant

Other projects:

Shenzhen Xixiang Wastewater Treatment Plant
 Ningxia Huaxia Iron and Steel 330KV Substation
 Guangxi Nannan Aluminum Industry
 Shandong Huangjin Gold Mine



Our office/team



Our Advantages



With over a decade of experience, our company has developed a strong expertise in power supply manufacturing, ensuring quality and reliability in our products



We have a diverse product line that can meet the different product needs of our customers



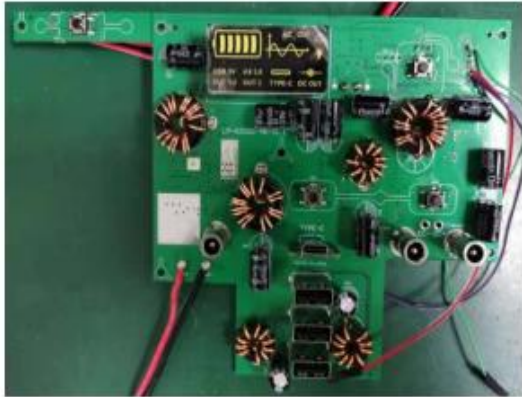
We have an experienced R&D team that can meet our customers' various customization needs



We have a well-established quality control process, ensure that our products consistently meet the highest standards of quality, reliability, and customer satisfaction



Our R&D advantages



DC board



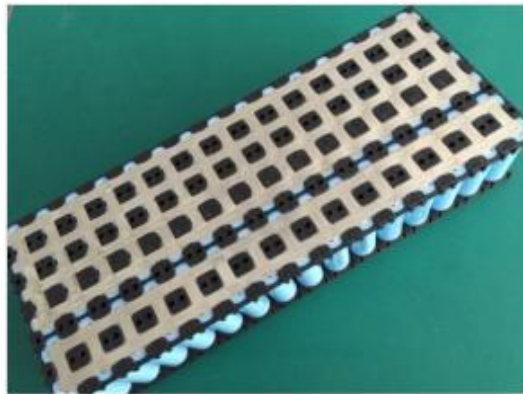
Solar Charging Solution MPPT



AC inveter



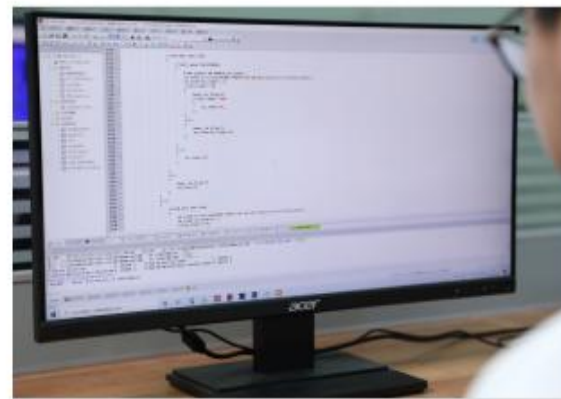
BMS



Battery Pack System



Thermal system control



UPS



Non-standard Auto Device

R&D team

Pressional
Experienced

Structural engineers



Microcontroller engineer



Project Engineer



Hardware engineer



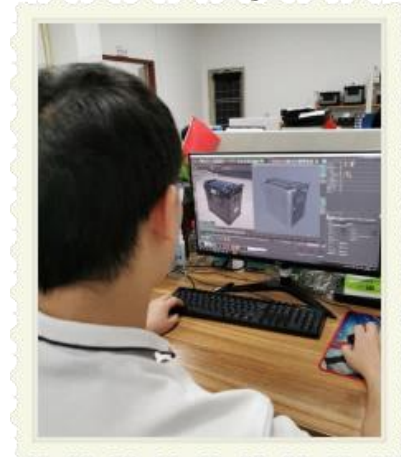
Test Engineer



Software engineer



3D designer



Layout engineer



OEM/ODM
Reliable Quality

Our Workshops



Reliable testing

ATE test



Over-charge/Discharge Test



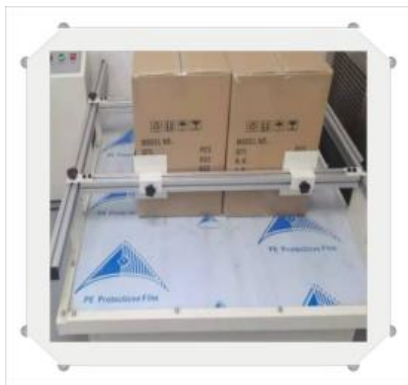
Basic Interface Test



Aging Test



Vibration Test



High/low Temperature Test



Dropping Test



Tumbling Barrel Test



Product Advantages

Relible quality, all series of power station are designed with multiple protection circuits, we developed two kind of battery energy systems including NMC and LiFePO4 battery to meet different customers need, with safety solution, long cycle life, compact size and light weight .

Low MOQ asked for our OEM/ODM orders,we're your factory located in China,with competitive supply chain and mature technology.

High inverter effective conversion rate more than 90%, which is at the forefront of the industry,

Flexible charging ways are supported, including standard adapter/power cord, solar panel, car charging, generator charging and other ways.

Professional R & D team, we spend much time and money in software and hardware research and development every year, constantly launches new products to meet the changes in market demand.

Hot Selling



BP1500

1500w

1280Wh-2560Wh

APP Control

Grade A LifePO4

Over 3500 Cycles

Full in 1.5 Hours

Overload Operations

Bidirectional Inverter

Expandable Capacity

CP300 PORTABLE POWER STATION



Product Description

AC Power	300W
Battery Capacity	100000 mAh
Battery Type	LiFePO4
Outlet	AC / DC / USB / Type-C
Lighting	Rear Light
Net Weight	3.9KG
Size	240*185*138mm
Color	Black, Silver, Orange, Green, Red (can be customized)

Compatibility



5 Charges
Laptop(56W)



33 Charges
iPhone(3000mAh)



10 Charges
iPad Air(30W)



14 Charges
Drone(22.2W)



80 Hours
LED Light(4W)



4 Hours
Refrigerator(65W)



11 Charges
Camera(28W)



16 Hours
Speaker(20W)



15Hours
Rice Cooker(100W)

CP500 PORTABLE POWER STATION



Product Description

AC Power	500W
Battery Capacity	162000 mAh
Battery Type	LiFePO4
Output	AC / DC / USB / Type-C
Lighting	Double Lights (Front + Rear Light)
Net Weight	6.05KG
Size	254*200*182mm
Color	Black, Silver, Orange, Green, Red (can be customized)

Compatibility

- 
9 Charges
 Laptop(56W)
- 
54 Charges
 iPhone(3000mAh)
- 
17 Charges
 iPad Air(30W)
- 
23 Charges
 Drone(22W)
- 
129 Hours
 LED Light(4W)
- 
8 Hours
 Refrigerator(65W)
- 
18 Charges
 Camera(28W)
- 
26 Hours
 Speaker(20W)
- 
20Hours
 Rice Cooker(100W)

UPS/ Bidirectional Inverter/ Support Parallel Connection/ With WIFI and Bluetooth/ Can Exceed Power Work/ Grade A LiFePO4 Battery

BP1500



▶ Rated Power:	1500W
▶ Peak Power:	3000W
▶ Rated Capacity:	1280Wh
▶ Battery Capacity:	400000mAh,3.2V
▶ Battery Type:	Grade A LiFePO4 Battery (2000 Cycles)
▶ AC Output:	110V/220V/230V ± 5% (Adjustable Voltage)
▶ Output Waveform:	Pure Sine Wave
▶ USB-A1+USB-A2 Output:	QC18W (QC3.0/QC2.0/AFC/FCP/BC1.2/APPLE)
▶ USB-A3+USB-A4 Output:	QC18W (QC3.0/QC2.0/AFC/FCP/BC1.2/APPLE)
▶ 2*Type-C Output:	PD100W (QC3.0/QC2.0/AFC/BC1.2/APPLE)
▶ Cigarette Lighter/4*DC5521 Output:	12V/10A
▶ Solar Panel/DC Charging:	10-60V=13A(400W Max)
▶ AC Charging:	90-264V~14A(1200W Max)
▶ Charging temperature:	0-40°C
▶ Discharge temperature:	-10-45°C
▶ Net Weight:	18KG
▶ Size (L*W*H):	374*265*263mm
▶ Gross Weight:	20KG
▶ Package (L*W*H):	472*368*365mm

UPS/ Bidirectional Inverter/ Support Parallel Connection/ With WIFI and Bluetooth/ Can Exceed Power Work/ Grade A LiFePO4 Battery

BP2400



▶ Rated Power:	2400W
▶ Peak Power:	4800W
▶ Rated Capacity:	2560Wh
▶ Battery Capacity:	800000mAh,3.2V
▶ Battery Type:	Grade A LiFePO4 Battery (2000 Cycles)
▶ AC Output:	110V/220V/230V ± 5% (Adjustable Voltage)
▶ Output Waveform:	Pure Sine Wave
▶ USB-A1+USB-A2 Output:	QC18W (QC3.0/QC2.0/AFC/FCP/BC1.2/APPLE)
▶ USB-A3+USB-A4 Output:	QC18W (QC3.0/QC2.0/AFC/FCP/BC1.2/APPLE)
▶ 2*Type-C Output:	PD100W (QC3.0/QC2.0/AFC/BC1.2/APPLE)
▶ Cigarette Lighter/4*DC5521 Output:	12V/10A
▶ Solar Panel/DC Charging:	10-60V=13A(400W Max)
▶ AC Charging:	90-264V~18A (US/JP:1600W Max;CN/EU:2000W Max)
▶ Charging temperature:	0-40°C
▶ Discharge temperature:	-10-45°C
▶ Net Weight:	26KG
▶ Size (L*W*H):	374*265*349mm
▶ Gross Weight:	29KG
▶ Package (L*W*H):	374*265*349mm

UPS/ Bidirectional Inverter/ Support Parallel Connection/ With WIFI and Bluetooth/ Can Exceed Power Work/ Grade A LiFePO4 Battery

CP3000



CP3000	Bidirectional Inverter Board/ Support Parallel Connection/ WiFi /BLUETOOTH	
Power	Rated Power: 3000W	Peak Power: 6000W
Capacity	Rated Capacity: 2560Wh	Battery Capacity: 800000mAh, 3.2V
Battery Type	Ganfeng Grade A LiFePO4 Battery Cell (Listed Company , Safer and Quality Guarantee)	
Output Waveform	Pure Sine Wave	
AC Output	100V/110V/120V/220V/230V/240V	
DC Output	4*USBA: QC3.0/AFC/18W	2*Type-C: PD 100W
	Cigarette Lighter: 12V/10A	DC5521: 12V/10A
Input	AC Adapter: 2400W; MPPT Charging: 800W; Car Charging: 120W	
Working Temperature	Charge: 0-40°C, Discharge: -10-45°C	

UPS/ Bidirectional Inverter/ Support Parallel Connection/ With WIFI and Bluetooth/ Can Exceed Power Work/ Grade A LiFePO4 Battery

CP5000



CP5000	Bidirectional Inverter Board	
Power	Rated Power: 5000W	Peak Power: 10000W
Capacity	Rated Capacity: 5120Wh	Battery Capacity: 1600000mAh, 3.2V
Battery Type	Grade A LiFePO4 Battery Cell (Listed Company, Safer and Quality Guarantee)	
Output Waveform	Pure Sine Wave	
AC Output	100V/110V/120V/220V/230V/240V	
DC Output	4*USB: QC3.0/AFC/18W	2*Type-C: PD 100W
	Cigarette Lighter: 12V/10A	DC5521: 12V/10A
Input	AC Adapter: 4000W; MPPT Charging (Solar Panels): 1600W; Car Charging: 120W	